



# **Return to SCHOOL**

**COVID SAFETY HANDBOOK**

**Guidelines, Resources, and Best  
Practices for the Safe Reopening  
of FUESD Schools.**

# TABLE OF CONTENTS

---

INTRODUCTION	PAGE 03
VALUES & COMMITMENTS	PAGE 04
LEARNING CHOICES	PAGE 05
SAMPLE LEARNING SCHEDULES	PAGE 06
ALTERNATE LEARNING CHOICES	PAGE 07
IN-PERSON SAFETY	PAGE 08
WHAT TO EXPECT AT SCHOOL	PAGE 10
MAINTENANCE AND OPERATIONS	PAGE 12
CHILD NUTRITION	PAGE 13

# SAFE SCHOOLS AT FUESD

---

Dear FUESD Families,

We want to thank you for your understanding, your patience, and your resilience during this truly world-shifting pandemic. We will continue to work together, united as one community, to weather this challenging season.

Our district has worked diligently to develop plans to safely and effectively reopen our schools. Following the California Department of Public Health (CDPH) guidelines and the most recent San Diego County Public Health Orders, this document serves to provide FUESD schools and families with information to support a safe return to school.

Please note that this document is based on the most current data and knowledge and as guidelines and mandates continue to change so will FUESD's response to maintain a safe and healthy school environment.

Most sincerely,

**Dr. Candace Singh,**  
Superintendent FUESD Schools

# OUR VALUES AND COMMITMENTS

---



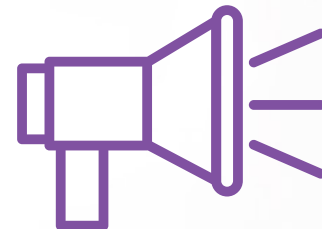
**FOLLOW  
PUBLIC HEALTH  
GUIDELINES**



**SUPPORT SOCIAL  
AND EMOTIONAL  
HEALTH**



**EFFECTIVE  
LEARNING  
SYSTEMS**



**PROVIDE  
COMMUNICATION  
AND ENGAGEMENT**

# LEARNING CHOICES

---

## TWO CHOICES

### **BLENDED LEARNING**

- Combination of face-to-face and distance learning
- 2 days at school / 3 days at home
- M/W or T/Th A/B schedules
- Blend of real-time learning with teacher and independent learning
- Extra support for students most in need
- Contact with classroom teachers everyday

### **100% ONLINE LEARNING**

- Daily instruction/work for all students required
- Blend of real-time learning with teacher and independent learning
- Continued tech support to ensure student access
- Extra support for students who need it most

# SAMPLE LEARNING SCHEDULES

## BLENDED LEARNING TK-6 A/B WEEKLY SCHEDULE

Students will be assigned to either Group “A” or “B” with the goal being to schedule students of the same family in the same group.

	Monday	Tuesday	Wednesday	Thursday	Friday
<b>Group A</b>	<b>At School</b> <i>In-Person Instruction</i>	<b>At Home</b> <i>At-Home Learning</i>	<b>At School</b> <i>In Person Instruction</i>	<b>At Home</b> <i>At-Home Learning</i>	<b>At Home</b> <i>At-Home Learning with the Whole Class</i>
<b>Group B</b>	<b>At Home</b> <i>At-Home Learning</i>	<b>At School</b> <i>In Person Instruction</i>	<b>At Home</b> <i>At-Home Learning</i>	<b>At School</b> <i>In Person Instruction</i>	<b>At Home</b> <i>At-Home Learning with the Whole Class</i>

## BLENDED LEARNING 7-8 A/B WEEKLY SCHEDULE

Students will be assigned to either Group “A” or “B” with the goal being to schedule students of the same family in the same group.

	Monday	Tuesday	Wednesday	Thursday	Friday
<b>Group A</b>	<b>Periods 1, 3, and 5</b> <i>In-Person Instruction</i>	<b>Periods 1, 3, and 5</b> <i>At-Home Learning</i>	<b>Periods 2, 4, and 6</b> <i>In-Person Instruction</i>	<b>Periods 2, 4, and 6</b> <i>At-Home Learning</i>	<b>Periods 1-6</b> <i>At-Home Learning</i>
<b>Group B</b>	<b>Periods 1, 3, and 5</b> <i>At-Home Learning</i>	<b>Periods 1, 3, and 5</b> <i>In Person Instruction</i>	<b>Periods 2, 4, and 6</b> <i>At-Home Learning</i>	<b>Periods 2, 4, and 6</b> <i>In-Person Instruction</i>	<b>Periods 1-6</b> <i>At-Home Learning</i>

# ALTERNATE LEARNING CHOICES

---

## **FALLBROOK VIRTUAL ACADEMY** **TAUGHT BY FUESD TEACHERS**

- Daily instruction and independent work required
- 5 days a week online
- Schedule created by FUESD teachers
- Tech support for students and parents
- Extra support for students most in need

**LEARN MORE AT: [FVA.FUESD.ORG](https://fva.fuesd.org)**

## **FALLBROOK HOMESCHOOL ACADEMY** **TAUGHT BY PARENTS**

- Option for new and continuing homeschool students
- 5 days a week at home
- Flexible schedule based on family needs
- Weekly check-ins with FUESD teacher
- Must meet requirements to participate

**LEARN MORE AT: [FHA.FUESD.ORG](https://fha.fuesd.org)**



# HEALTH AND SAFETY FOR IN-PERSON LEARNING

---

The health and safety of our students, staff, and families are always our highest priority. Due to new health and safety guidelines from the California Department of Public Health, the 2020-21 school year will look much different than in previous years. FUESD will continue to focus on academic instruction, as well as programs that are crucial for the mental, social, emotional, and physical well-being of students.

## WORKING TOGETHER, WE CAN KEEP OUR STUDENTS AND STAFF SAFE.



## SCREENING AT HOME

- Parents/guardians are required to screen their children for symptoms such as cough, shortness of breath, runny nose and fever at home before coming to school.
- Anyone with a fever of 100°F or more should not go to a school site. Those experiencing symptoms including persistent cough, shortness of breath, or runny nose should not attend school, even if no fever is present.
- Staff members are required to self-screen and complete a daily temperature check prior to entering an FUESD site.





## ARRIVING AT SCHOOL

- Teachers will visually screen students for signs of illness as students arrive in class.
- Arrival/departure times and campus entry points will be strategically managed to allow for appropriate physical distancing.
- Physical barriers have been installed in areas where face-to-face interaction with the public occurs.
- School sites have signage throughout campus to encourage physical distancing and proper sanitation.
- Staff will be tested regularly, in compliance with CDPH guidelines, as practicable and lab testing capacity allows.



## WHEN SYMPTOMS PRESENT

1. Apply appropriate PPE and isolate staff or student in designated room until sent home.
2. Recommend to staff or students that they reach out to health care provider for instructions, and potential COVID-19 test.
3. FUESD Human Resources will immediately assist.
4. Student/Staff will quarantine for 14 days.
5. District personnel will help to identify potential “Close Contacts” (individuals closer than 6 feet with or without a mask for a cumulative 15 minutes in one day).
6. District will follow SD Public Health protocols and procedures for communicating with appropriate groups/people.

# WHAT TO EXPECT AT SCHOOL

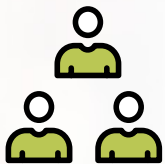
---

## PERSONAL PROTECTIVE EQUIPMENT & SAFETY PROTOCOLS



### HAND HYGIENE

- Staff have been trained on proper hand hygiene, including hand washing and use of hand sanitizer (CDC: Handwashing: Clean Hands Save Lives).
- Students will be trained on proper hand hygiene, including hand washing and use of hand sanitizer.
- Students will be instructed to wash or sanitize their hands upon arrival at campus gates and reinforced daily with time allotted to wash hands regularly.



### PHYSICAL DISTANCING

- Schools have developed plans to support physical distancing, such as removing excess furniture in classrooms and mapping for traffic flow for students on campus.
- Student workspaces have been arranged with consideration for maximum physical distancing, following public health recommendations.
- Smaller class sizes have been created to promote physical distancing.

## PERSONAL PROTECTIVE EQUIPMENT & SAFETY PROTOCOLS

---



### FACE-COVERINGS

- The California Department of Public Health(CDPH) safety protocols for schools require students in grades 3-12 to wear a face-covering throughout the school day.
- The CDPH strongly recommends students two years old to 2nd grade to wear a face-covering. Therefore, given this new mandate/recommendation, FUESD schools will be asking students in T-K through 2nd grade to wear a face covering, unless they have an exemption from their doctor.
- Health data collected through this pandemic shows that having students and staff wear face-coverings strongly decreases the possibility of COVID transmission, especially while indoors.

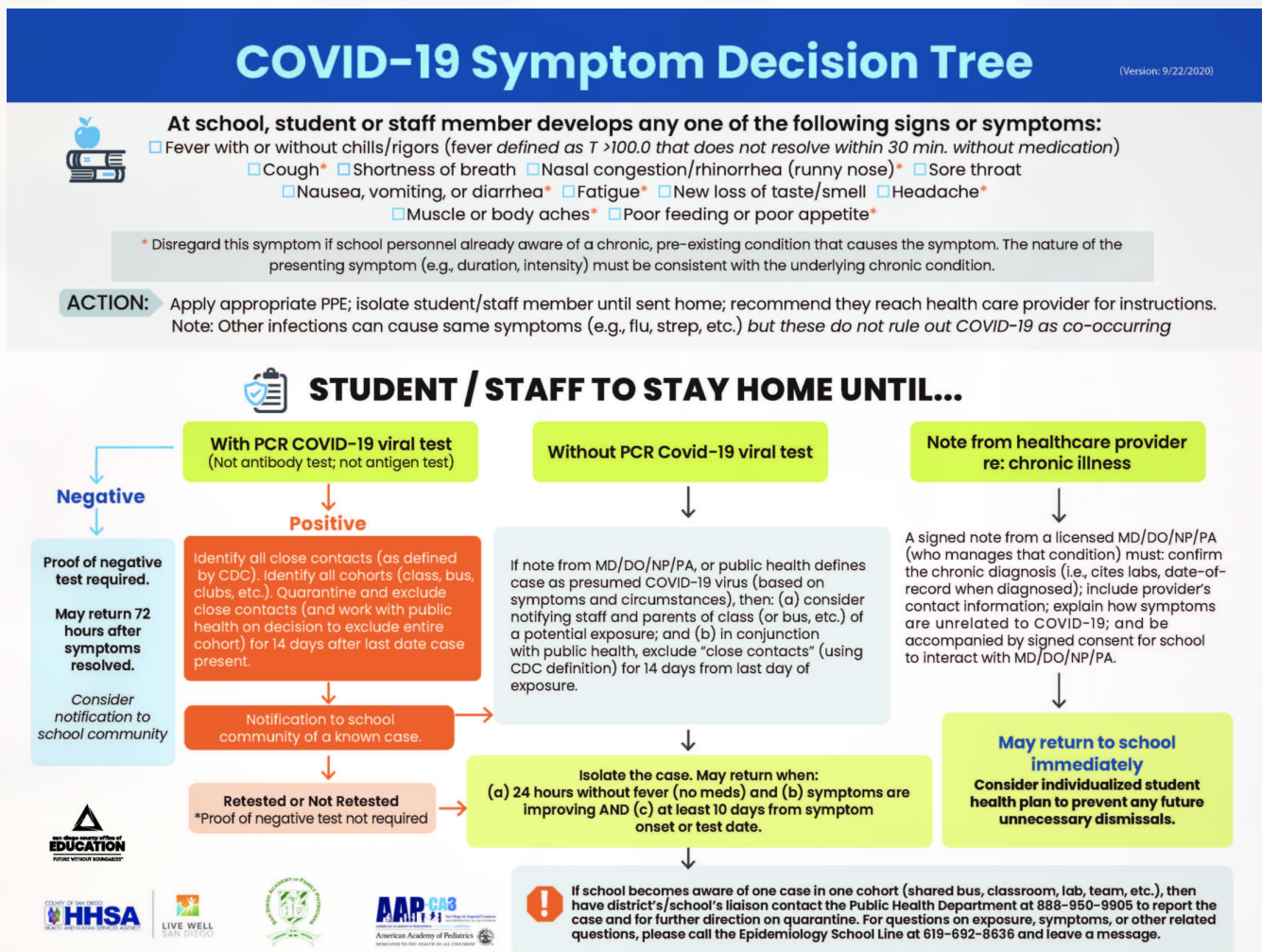


### CHECKING FOR SYMPTOMS

- **School staff will consistently be visually screening students for the following symptoms:**
  - Fever with or without chills
  - Cough, Shortness of Breath
  - Sore throat or Nasal Congestion
  - Nausea, vomiting, diarrhea
  - New loss of taste or smell
  - Headache, Fatigue,
  - muscle aches

# COVID-CASE PROTOCOLS

The COVID-19 Decision Tree, a collaborative effort between the San Diego County Office of Education and San Diego County Public Health, is designed to assist school personnel in making decisions on how to handle students or staff members who become ill or present symptoms while at school. The Decision Tree will be updated based on the latest public health guidance. Please check back frequently for the most current version.



# MAINTENANCE AND OPERATIONS

---

**THE FUESD FACILITIES TEAM HAS WORKED TO CREATE THE SAFEST LEARNING ENVIRONMENT POSSIBLE.**

## **DISINFECTION AND SANITATION**

- Regular disinfection of shared classroom items such as tables and chairs.
- Disinfect high-touch surfaces regularly throughout the day.

## **AIR FILTRATION**

- All units have been upgraded with anti-microbial filters.
- Upgrading to MERV-13 filters with all applicable units.

## **PERSONAL PROTECTIVE EQUIPMENT FOR STAFF**

- All students and staff are required to wear fabric face coverings unless prevented due to health conditions or instructional/communication needs. Additional disposable masks and gloves are also available, as needed.

## **TOUCH-LESS HAND SANITIZING STATIONS**

- Hand sanitizing stations have been installed and are located in common areas such as lunch areas, MPRs, front offices, and priority locations identified by the staff.



# CHILD NUTRITION

---

## STUDENT MEALS FOR ON-CAMPUS AND DISTANCE LEARNING

Child Nutrition Services will provide breakfast and lunch to all students (at no cost) while they are on campus, as well as curbside grab & go meal services for online learning.



### ON-CAMPUS MEAL SERVICE

#### BREAKFAST

Cold sack breakfast meals offered to all students arriving on campus.

#### LUNCH

Cold sack lunches delivered to classrooms prior to dismissal time.



### DISTANCE LEARNING MEAL SERVICE

#### CURBSIDE GRAB & GO

Three days worth of frozen and refrigerated breakfast and lunch meals offered to families each week.

#### FALLBROOK VIRTUAL ACADEMY

Fallbrook Virtual Academy families will continue to receive meals for five days.

# CHILD NUTRITION

---

## ADDITIONAL PROTOCOLS FOR SAFE MEAL DISTRIBUTION

- Sites have assigned spaces for lunch (as needed) to ensure physical distancing in outdoor lunch areas.
- Students will be dismissed to go to lunch in a method to maintain physical distancing, as practicable.
- Students will wash or sanitize their hands prior to entering lunch area.
- Students will wash or sanitize their hands prior to re-entering classrooms.
- Touch-less hand sanitizing dispensers are located in lunch areas.
- Staggered times and locations for meal pickup have been created to avoid large groups.





**Learn more about FUESD and  
our work to create a safe and  
healthy community at  
**FUESD.org****

**Follow Us on Social Media**



**@FUESDschoo**



**facebook.com/FUESDschoo**