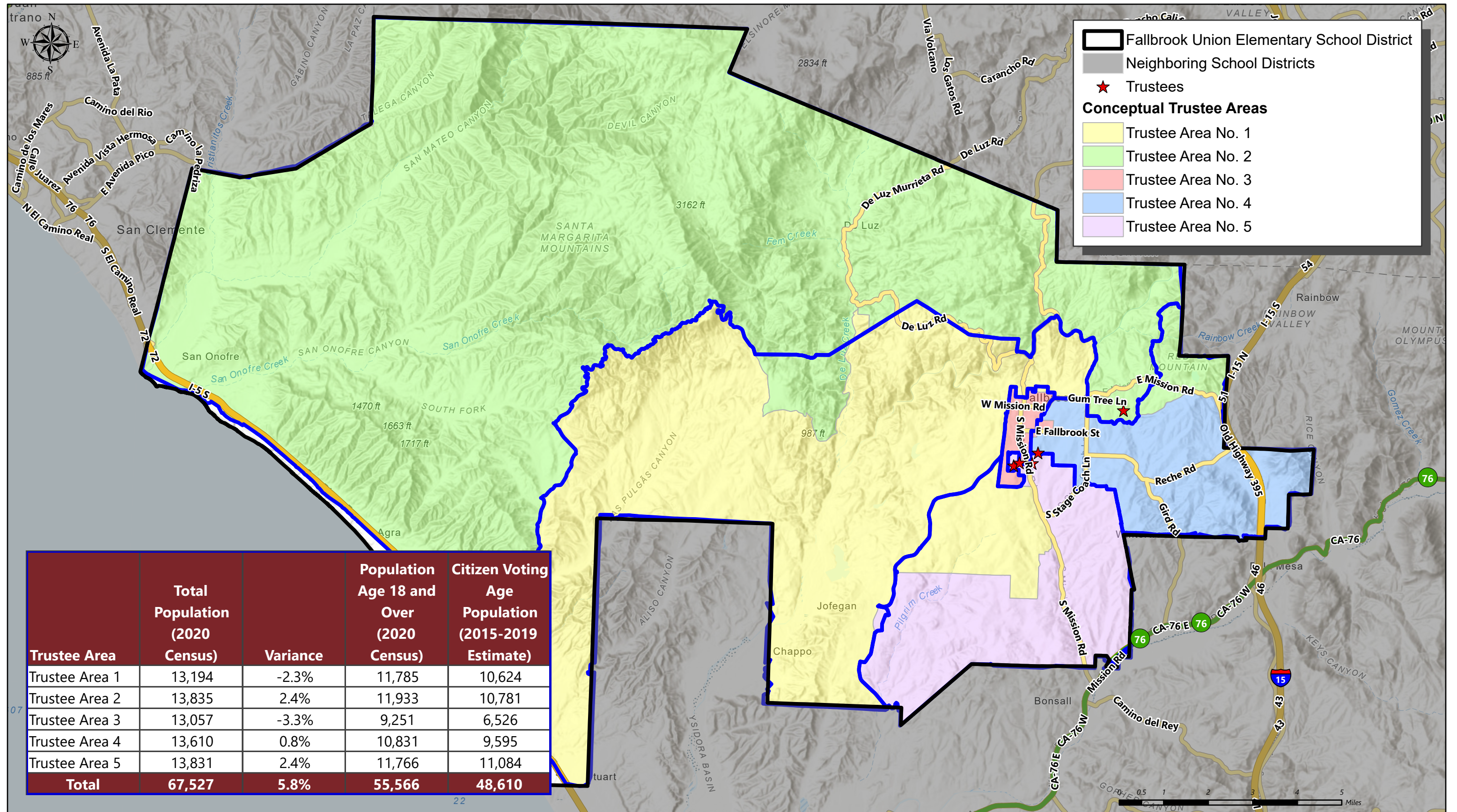
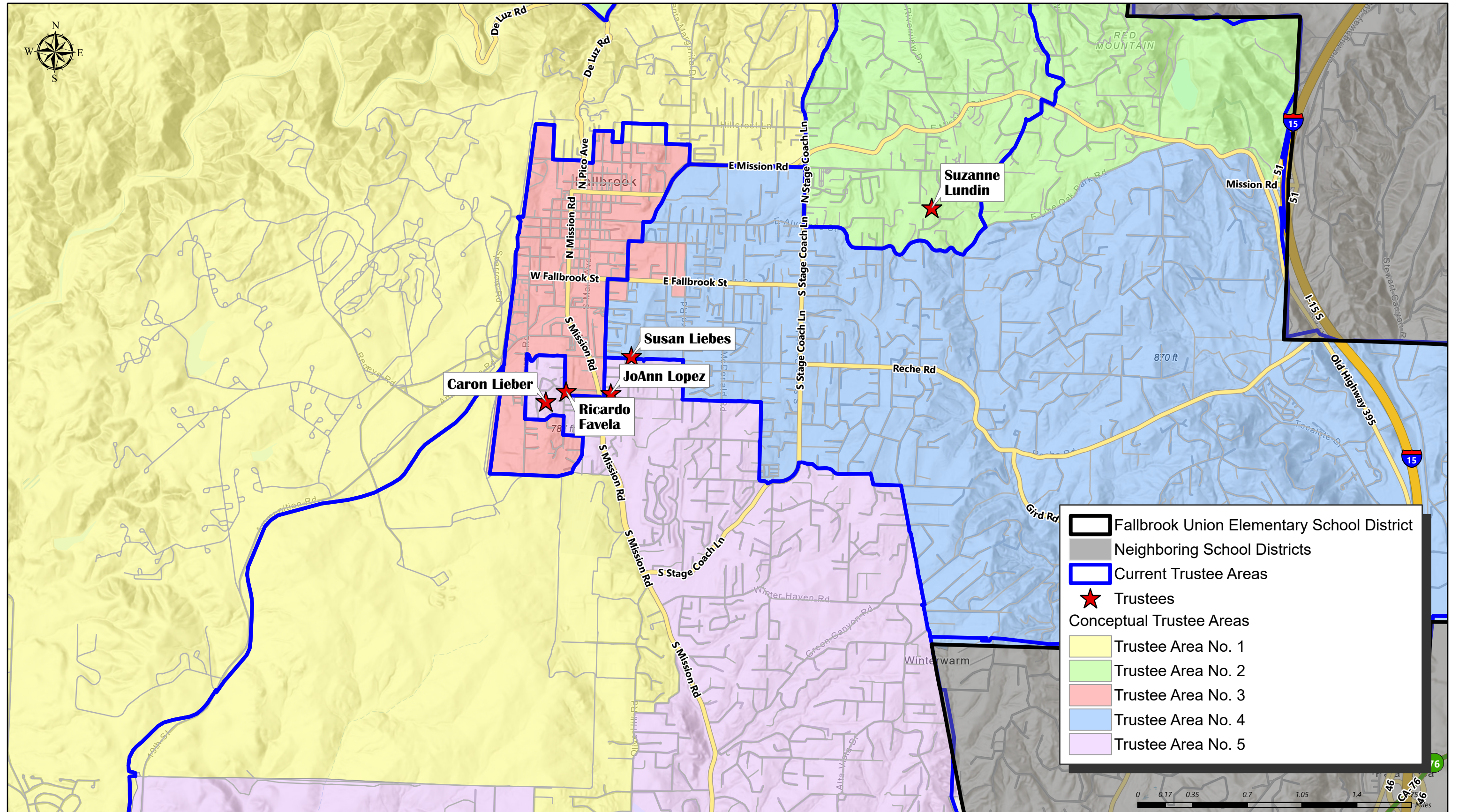


FALLBROOK UNION ELEMENTARY SCHOOL DISTRICT

CONCEPTUAL TRUSTEE AREAS - SCENARIO 1





FALLBROOK UNION ELEMENTARY SCHOOL DISTRICT

CONCEPTUAL TRUSTEE AREAS - SCENARIO 1

Total Population:	67,527	Ideal Population:	13,505	Variance:	5.8%
--------------------------	---------------	--------------------------	---------------	------------------	-------------

Total Population (2020 Census)					
	Trustee Area 1	Trustee Area 2	Trustee Area 3	Trustee Area 4	Trustee Area 5
Population	13,194	13,835	13,057	13,610	13,831
Population Variance	-311	330	-448	105	326
	-2.3%	2.4%	-3.3%	0.8%	2.4%
Hispanic/Latino	30.8%	26.5%	73.2%	33.5%	26.1%
White	53.0%	61.9%	20.2%	55.7%	61.8%
Black/ African American	8.1%	4.1%	1.9%	1.4%	3.4%
American Indian/ Alaska Native	0.9%	0.7%	0.3%	0.4%	0.5%
Asian	3.5%	2.8%	1.5%	4.0%	3.3%
Native Hawaiian/ Other Pacific Islander	1.0%	0.9%	0.4%	0.2%	0.4%
Other	0.2%	0.3%	0.4%	0.4%	0.4%
Two or More Races	2.4%	2.8%	2.1%	4.5%	4.3%

Population 18 and Over (2020 Census)					
	Trustee Area 1	Trustee Area 2	Trustee Area 3	Trustee Area 4	Trustee Area 5
Population	11,785	11,933	9,251	10,831	11,766
Hispanic/Latino	29.6%	25.6%	68.5%	29.3%	24.4%
White	54.4%	62.8%	23.9%	59.9%	63.5%
Black/ African American	8.5%	4.3%	2.2%	1.4%	3.7%
American Indian/ Alaska Native	1.0%	0.8%	0.4%	0.4%	0.5%
Asian	3.7%	3.2%	2.0%	4.4%	3.7%
Native Hawaiian/ Other Pacific Islander	1.1%	1.0%	0.5%	0.3%	0.4%
Other	0.2%	0.3%	0.4%	0.3%	0.4%
Two or More Races	1.5%	2.1%	2.1%	3.9%	3.5%

Citizens by Voting Age Population Estimate (2015-2019)					
	Trustee Area 1	Trustee Area 2	Trustee Area 3	Trustee Area 4	Trustee Area 5
Population	10,624	10,781	6,526	9,595	11,084
Hispanic/Latino	24.3%	20.3%	52.3%	26.1%	20.1%
White	59.9%	69.9%	39.3%	67.3%	70.3%
Black/ African American	10.5%	5.0%	4.5%	0.6%	4.7%
American Indian/ Alaska Native	1.2%	0.8%	0.4%	0.3%	0.6%
Asian	2.3%	2.3%	1.7%	4.6%	2.6%
Native Hawaiian/ Other Pacific Islander	0.6%	0.5%	0.4%	0.0%	0.6%
Other	0.0%	0.0%	0.0%	0.0%	0.0%
Two or More Races	1.1%	1.2%	1.5%	1.0%	1.2%