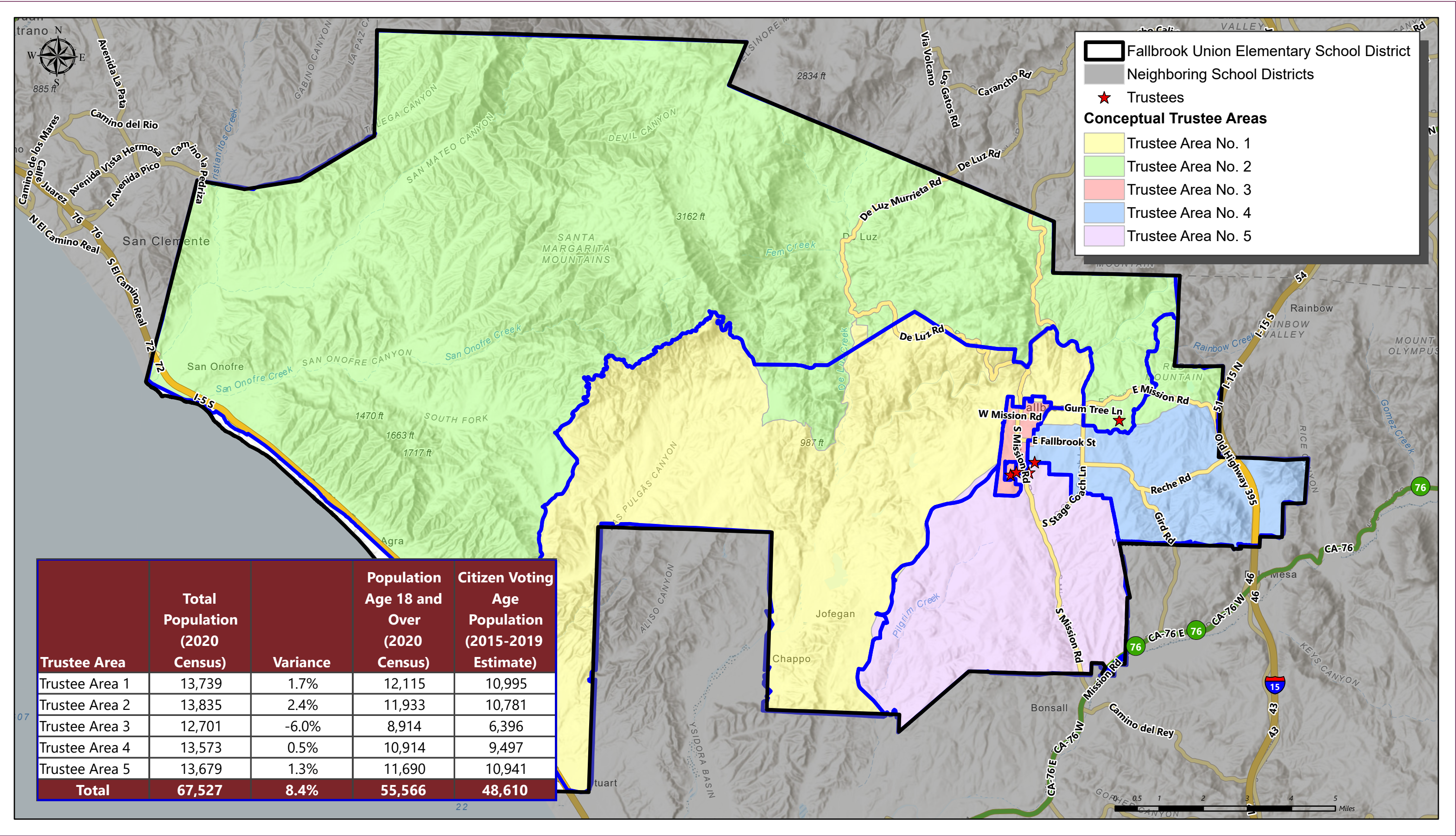
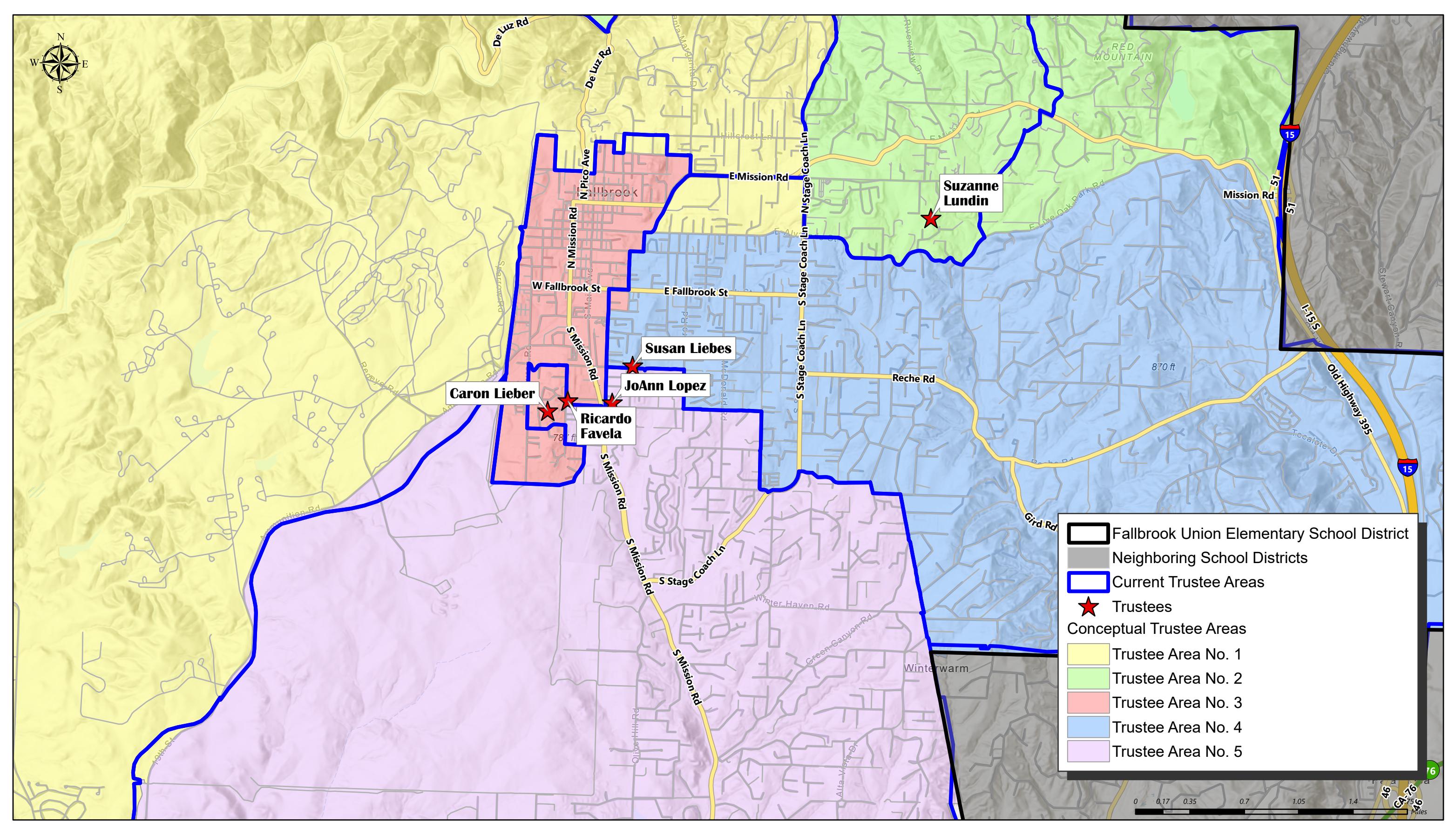


FALLBROOK UNION ELEMENTARY SCHOOL DISTRICT

CONCEPTUAL TRUSTEE AREAS - SCENARIO 2





FALLBROOK UNION ELEMENTARY SCHOOL DISTRICT

CONCEPTUAL TRUSTEE AREAS - SCENARIO 2

Total Population:	67,527	Ideal Population:	13,505	Variance:	8.4%
-------------------	--------	-------------------	--------	-----------	------

Total Population (2020 Census)					
	Trustee Area 1	Trustee Area 2	Trustee Area 3	Trustee Area 4	Trustee Area 5
Population	13,739	13,835	12,701	13,573	13,679
Population Variance	234	330	-804	68	174
	1.7%	2.4%	-6.0%	0.5%	1.3%
Hispanic/Latino	32.7%	26.5%	73.7%	33.2%	25.2%
White	51.6%	61.9%	19.2%	56.3%	62.7%
Black/ African American	7.9%	4.1%	2.1%	1.3%	3.3%
American Indian/ Alaska Native	0.9%	0.7%	0.3%	0.3%	0.4%
Asian	3.5%	2.8%	1.6%	3.9%	3.3%
Native Hawaiian/ Other Pacific Islander	1.0%	0.9%	0.4%	0.2%	0.4%
Other	0.2%	0.3%	0.5%	0.4%	0.4%
Two or More Races	2.2%	2.8%	2.3%	4.5%	4.3%

Population 18 and Over (2020 Census)					
	Trustee Area 1	Trustee Area 2	Trustee Area 3	Trustee Area 4	Trustee Area 5
Population	12,115	11,933	8,914	10,914	11,690
Hispanic/Latino	31.0%	25.6%	69.4%	29.0%	23.7%
White	53.2%	62.8%	22.5%	60.5%	64.4%
Black/ African American	8.4%	4.3%	2.4%	1.4%	3.5%
American Indian/ Alaska Native	1.0%	0.8%	0.4%	0.4%	0.5%
Asian	3.7%	3.2%	2.1%	4.3%	3.7%
Native Hawaiian/ Other Pacific Islander	1.1%	1.0%	0.5%	0.2%	0.4%
Other	0.2%	0.3%	0.5%	0.3%	0.4%
Two or More Races	1.4%	2.1%	2.2%	3.9%	3.5%

Citizens by Voting Age Population Estimate (2015-2019)					
	Trustee Area 1	Trustee Area 2	Trustee Area 3	Trustee Area 4	Trustee Area 5
Population	10,995	10,781	6,396	9,497	10,941
Hispanic/Latino	25.0%	20.3%	52.7%	26.6%	18.9%
White	58.5%	69.9%	37.7%	68.3%	71.7%
Black/ African American	10.2%	5.0%	5.5%	0.6%	4.2%
American Indian/ Alaska Native	1.3%	0.8%	0.3%	0.3%	0.6%
Asian	3.4%	2.3%	1.7%	3.2%	2.7%
Native Hawaiian/ Other Pacific Islander	0.6%	0.5%	0.4%	0.0%	0.6%
Other	0.0%	0.0%	0.0%	0.0%	0.0%
Two or More Races	0.9%	1.2%	1.6%	1.0%	1.3%