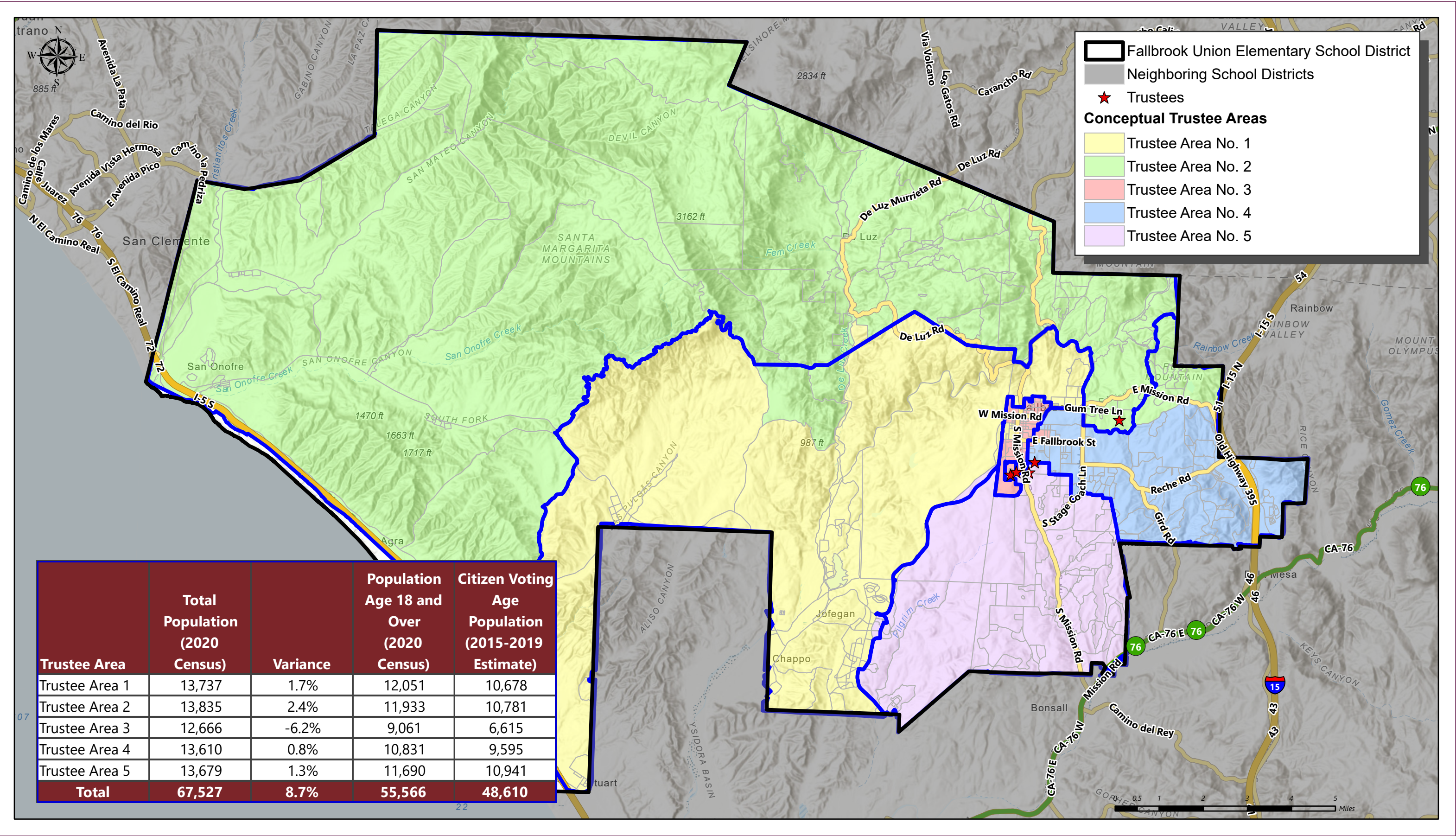
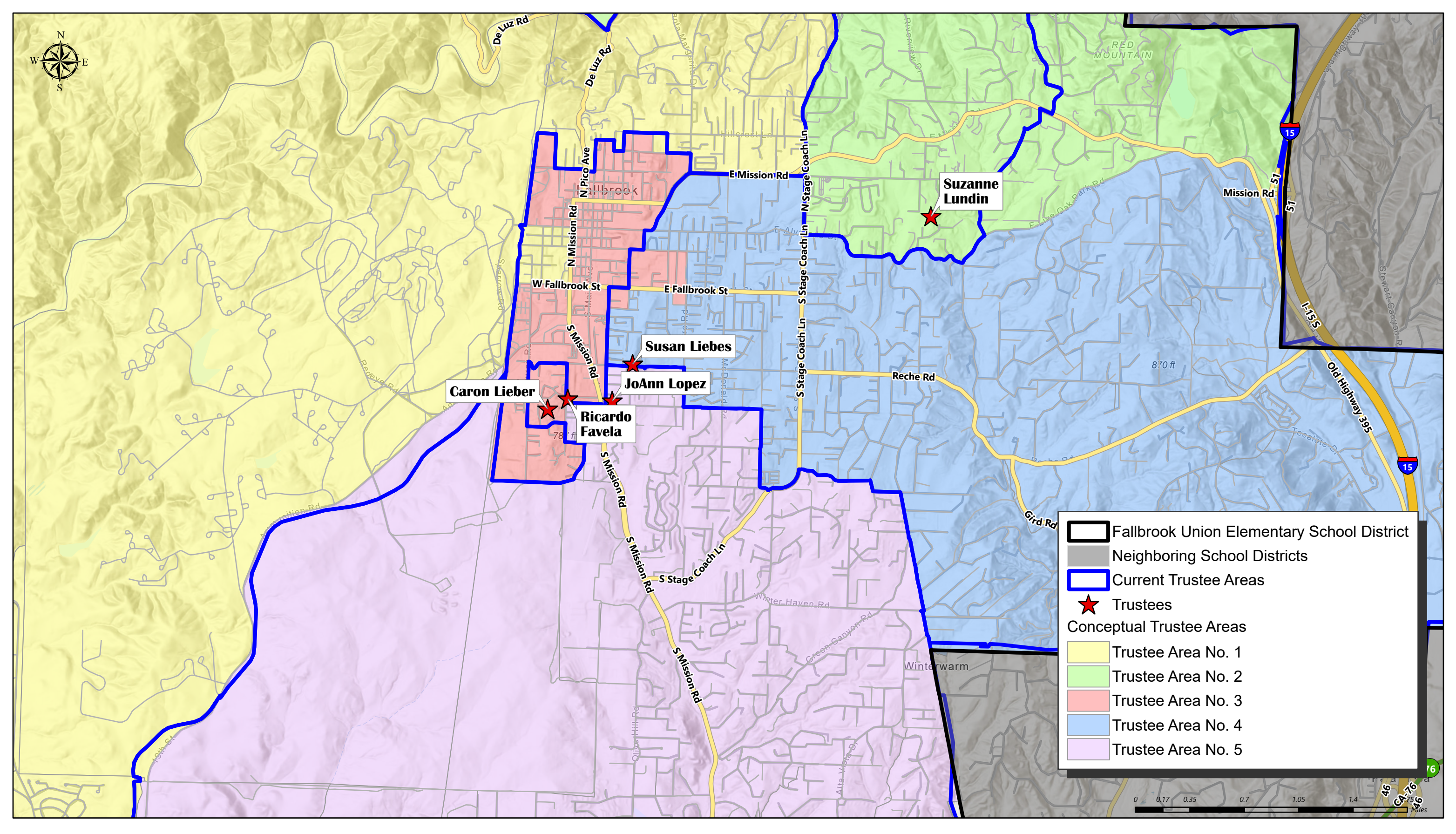


FALLBROOK UNION ELEMENTARY SCHOOL DISTRICT

CONCEPTUAL TRUSTEE AREAS - SCENARIO 2A





FALLBROOK UNION ELEMENTARY SCHOOL DISTRICT

CONCEPTUAL TRUSTEE AREAS - SCENARIO 2A

Total Population:	67,527	Ideal Population:	13,505	Variance:	8.7%
-------------------	--------	-------------------	--------	-----------	------

Total Population (2020 Census)					
	Trustee Area 1	Trustee Area 2	Trustee Area 3	Trustee Area 4	Trustee Area 5
Population	13,737	13,835	12,666	13,610	13,679
Population Variance	232	330	-839	105	174
	1.7%	2.4%	-6.2%	0.8%	1.3%
Hispanic/Latino	34.8%	26.5%	71.2%	33.5%	25.2%
White	49.7%	61.9%	21.9%	55.7%	62.7%
Black/ African American	7.9%	4.1%	2.1%	1.4%	3.3%
American Indian/ Alaska Native	0.9%	0.7%	0.3%	0.4%	0.4%
Asian	3.4%	2.8%	1.5%	4.0%	3.3%
Native Hawaiian/ Other Pacific Islander	1.0%	0.9%	0.3%	0.2%	0.4%
Other	0.3%	0.3%	0.4%	0.4%	0.4%
Two or More Races	2.1%	2.8%	2.3%	4.5%	4.3%

Population 18 and Over (2020 Census)					
	Trustee Area 1	Trustee Area 2	Trustee Area 3	Trustee Area 4	Trustee Area 5
Population	12,051	11,933	9,061	10,831	11,690
Hispanic/Latino	32.4%	25.6%	66.5%	29.3%	0.0%
White	51.8%	62.8%	25.7%	59.9%	64.4%
Black/ African American	8.4%	4.3%	2.3%	1.4%	3.5%
American Indian/ Alaska Native	1.0%	0.8%	0.4%	0.4%	0.5%
Asian	3.7%	3.2%	2.0%	4.4%	3.7%
Native Hawaiian/ Other Pacific Islander	1.0%	1.0%	0.5%	0.3%	0.4%
Other	0.3%	0.3%	0.4%	0.3%	0.4%
Two or More Races	1.5%	2.1%	2.2%	3.9%	3.5%

Citizens by Voting Age Population Estimate (2015-2019)					
	Trustee Area 1	Trustee Area 2	Trustee Area 3	Trustee Area 4	Trustee Area 5
Population	10,678	10,781	6,615	9,595	10,941
Hispanic/Latino	24.1%	20.3%	54.1%	26.1%	18.9%
White	59.6%	69.9%	37.8%	67.3%	71.7%
Black/ African American	11.3%	5.0%	4.0%	0.6%	4.2%
American Indian/ Alaska Native	1.1%	0.8%	0.6%	0.3%	0.6%
Asian	2.2%	2.3%	1.7%	4.6%	2.7%
Native Hawaiian/ Other Pacific Islander	0.7%	0.5%	0.2%	0.0%	0.6%
Other	0.0%	0.0%	0.0%	0.0%	0.0%
Two or More Races	1.0%	1.2%	1.5%	1.0%	1.3%